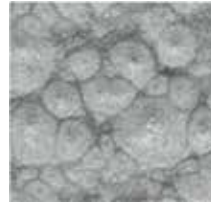


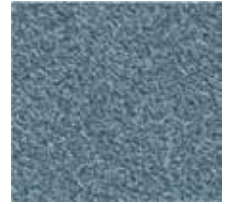
Special Effect Products

GALTEX[®]
Specialty Paints & Textures

OXITEM



Martele



Ferro-Gel



AQUA DYES FOR WOOD



XILATEM
aqua



Ferro-Gel



GREY LEAD 200



BLACK 201



ANTIQUE GOLD 202



GREEN OXIDE 203



MAGENTA 204

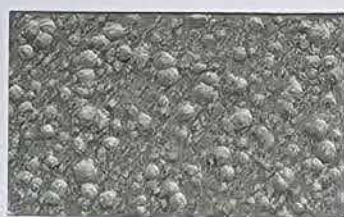


BLUE METAL 206



MAROON 210

Martele



ALUMINUM SILVER 001



DARK GREY 003



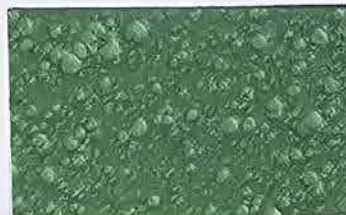
GOLDEN 004



RED OXIDE 006



MAGENTA 007



YELLOWISH GREEN 009



BLUE 010





Ferro-Gel



WROUGHT IRON FINISH

Martele



HAMMERTONE FINISH

FERRO-GEL

Metallic enamel for finishes with a wrought iron appearance. High level of protection, elastic, easy to apply, and does not crack. Compatible with our Tintometric System

Range of colours: See samples.

MARTELE

Shiny synthetic enamel with a MARTELE appearance for interior and exterior surfaces. Quick-drying with a good level of hardness. Good shine and easy to apply.

Compatible with our Tintometric System

Range of colours: See samples.



OXITEM

Do you want to reproduce the texture and colour of the pieces rescued from excavations or maybe you prefer to be up to date with decoration?

Galtex presents the new decorative paint system oxitem. This new range of five products allows you to reproduce the rust effect whose appearance of aging and corrosion is extreme with a more realistic finish.

PRODUCT DESCRIPTION

A range of five products, for interior and exterior, designed to reproduce the rust effect with a realistic finish; the result is a perfect rust effect. Especially suitable for decoration of furniture, lamps, walls, columns, doors and other decorative elements.

APPLICATION

On Plaster / Cement / Concrete / Wood / etc.

1. On a clean and well-prepared base, apply one coat of OXITEM PRIMER. Let it dry for 8 hours before applying OXITEM. Apply with roller, brush or spray gun.
2. Apply the first layer of OXITEM ready for use on the primer. Apply a second layer of OXITEM 1-2 hours later to ensure a correct application. Apply preferably with a wide paint brush.
3. Apply one coat of OXITEM ACTIVATOR ready for use, and wait 30 - 120 minutes. Apply a second coat of OXITEM ACTIVATOR and let it dry for 24 hours. Apply preferably with wide paint brush or spray.
4. Apply the final varnish OXITEM PROTECTOR, depending on whether it is for exterior or interior, ready for use. Application with wide paint brush, roller or spray gun.

-

1. To apply the system on steel, the surface should be shot-blasted up to degree Sa 2 1/2. Continuing the system from the second point.
2. If the steel cannot be shot-blasted, clean and degrease it thoroughly and remove rust spots by brushing. Proceed from point 3 (activator application).



NOTE

Refer to the technical data sheets of the products before application.



APPLICATION

OXITEM system consists of four products, namely:

OXITEM PRIMER

Water-based and adherent primer with special polymers to prepare surfaces before painting. Quick drying, non-yellowing. For interior and exterior.

OXITEM

Water-based and metallic iron paint, the product naturally oxidizes when exposed to atmospheric elements. For indoor and outdoor use.

OXITEM ACTIVATOR

Water-based solution to activate rust effect as it accelerates OXITEM oxidation and creates a rust finish.

PROTECTOR OXITEM

Water-based and saturated varnish, final coat of OXITEM system. Colourless, elastic, non-yellowing, suitable for outdoor use.



The colours of this brochure have been made with graphic inks. There may be slight differences of shade with regard to the colour manufactured.

1



2



3



4



AQUA DYES FOR WOOD

Change the natural color and highlight the grain
of Wood Indoors

colours |



| hazelnut



| mahogany



| cherry



| honey



| walnut



| oak



| sapeli

Restoration and Conservation



AQUA DYES FOR WOOD

- **STAINS VIRGIN WOOD**
- **RESTORES AND PRESERVES WOOD**
- **REDUCE THE INTENSITY BY DILUTING WITH WATER**



- Water-based dyes
- Changes the natural color of the wood interiors
- Very fast drying
- Great penetration power
- Colors any type of wood with water
- After application and drying it admits lacquering with nitro and polyurethane products
- Easy application

How to use:

Ready to use

depending on the intensity of the desired tone. If diluted, use water.



For more information see Technical Data Sheet

Changes the natural colour and highlights the grain of wood in interiors

- Stain for virgin wood
- Restores and preserves wood
- Reduce their intensity by diluting with water
-
- Water-based dyeing
- Changes the natural colour of the wood in interiors
- Very fast drying
- High Penetration capacity
- Colours all types of wood with water
- After application and drying, it can be varnished with nitro and polyurethane products
- Easy to apply
-



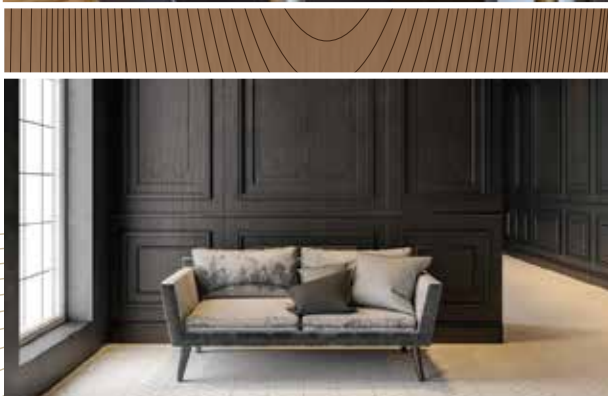


ESMALTE

WOOD GRAIN EFFECT ENAMEL

Ideal to get
any type of decoration

GALTEX[®]
Specialty Paints & Textures



colours



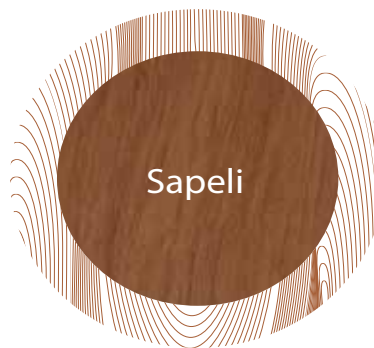
Do you want to get a WOOD GRAIN EFFECT?

ideal for any type of decoration

- Easy to apply
- Smooth finish
- Uses: interior and exterior
- High hardness

Applications:
wood (veneered and solid),
metal, steel, masonry materials
(plaster, cement ...)

* On properly prepared surfaces



Sapeli



Embero



Walnut



Oak



Light Walnut



Wenge



Mahogany



Ash Oak



XILATEM

FINISH FOR WOOD

aqua matt

Water-based finishing product for wood based on special polymers, with incorporated U.V. protectors.

Indoors and outdoors

Breathable

Penetrating

It does not form film on wood
(if not applied excessively)

Does not crack

High durability outside
due to the pigments that are incorporated and to U.V protectors

It prevents harmful effects on wood

The colours of the range are intermixable



Finishing product for wood based on special polymers based on aqueous, with U.V. protectors. incorporated

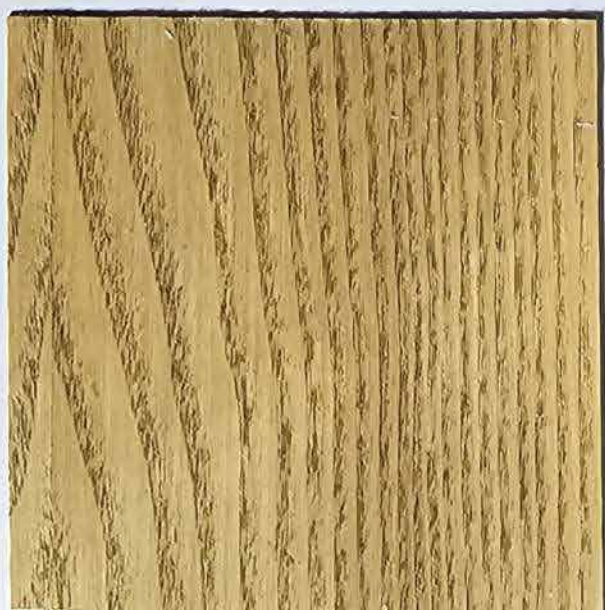
- Interior and Exterior
- Breathable
- Penetrating
- Does not form a film on the wood
- Does not crack
- High duration outdoors
- Prevents harmful effects on wood
- The colors of the range are intermixable



Chestnut | Castaño



Teak | Teca



Oak | Roble



Walnut | Nogal



GALTEX COATINGS PVT LTD

📍 1st Floor, Galtex Square, NH-544
Metro Pillar 330, Pathadipalam
Kochi, Kerala, India. PIN - 682 033

☎ +91 484 2542542

✉ coatings@galtexindia.com

🌐 www.galtexindia.com

📘 GaltexTextures | 📷 galtexcoatings

📺 Galtex Texture Training

📞 **Customer Care: 9895 400 500**

