



## Sparkle Stones

Unmatched *Glitter* Effects





A11-X



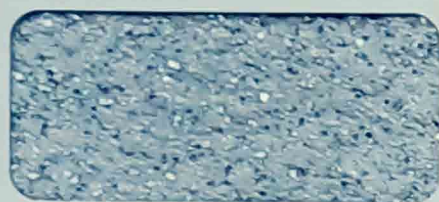
A11-Y



A12-X



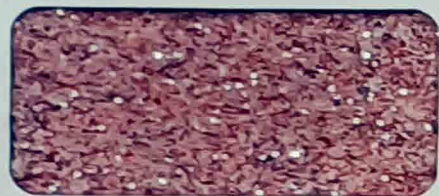
A12-Y



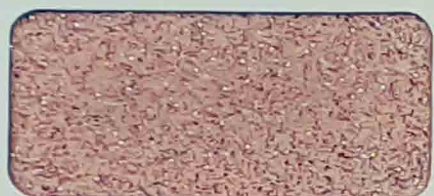
A13-X



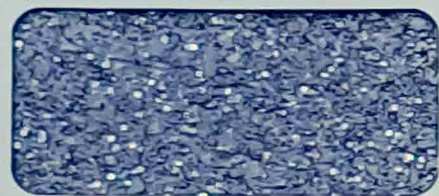
A13-Y



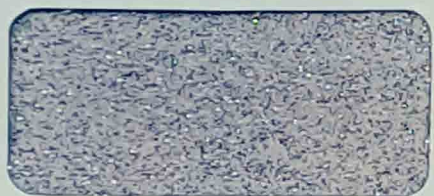
A14-X



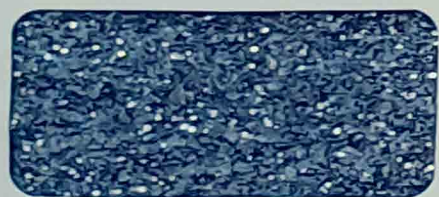
A14-Y



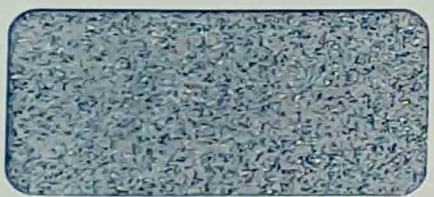
A15-X



A15-Y



A16-X



A16-Y



A17-X



A17-Y



A18-X



A18-Y





B31-X



B31-Y



B32-X



B32-Y



B33-X



B33-Y



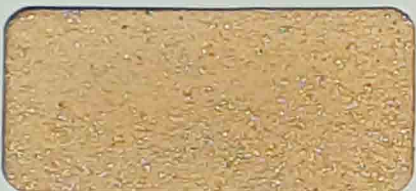
B34-X



B34-Y



B35-X



B35-Y



B36-X



B36-Y



B37-X



B37-Y



B38-X

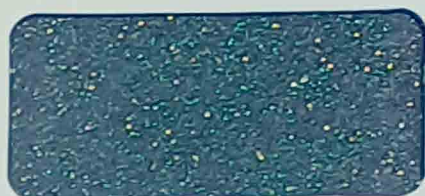


B38-Y

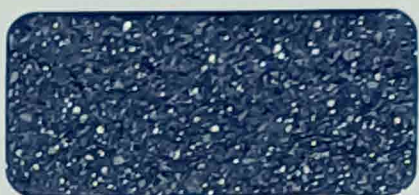




C41-X



C41-Y



C42-X



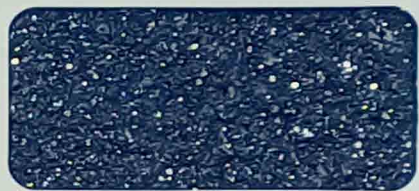
C42-Y



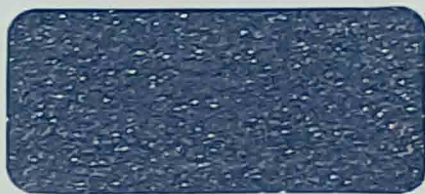
C43-X



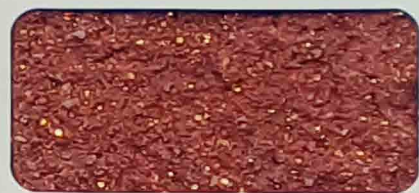
C43-Y



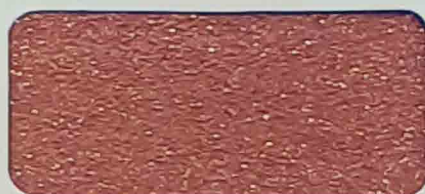
C44-X



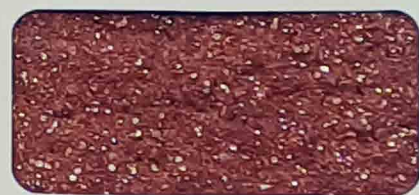
C44-Y



D45-X



D45-Y



D46-X



D46-Y



D47-X



D47-Y



D48-X



D48-Y





A21-X



A21-Y



A22-X



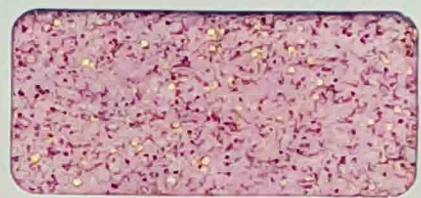
A22-Y



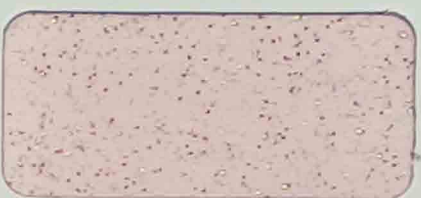
A23-X



A23-Y



A24-X



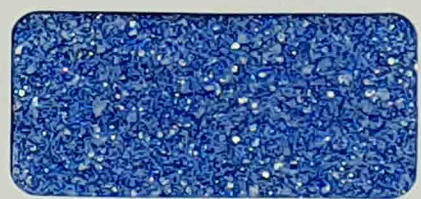
A24-Y



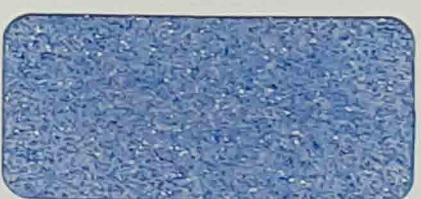
A25-X



A25-Y



A26-X



A26-Y



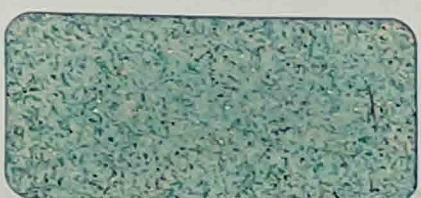
A27-X



A27-Y



A28-X



A28-Y

## Discover GALTEX

Galtex's beginning in the year 1999, with extensive research and hands on expertise that set us evolving to be the first, original, numero uno company to produce texture finishes for all surfaces for over 22 years. The passion to create bespoke finishes with the scope to modify further, for the connoisseurs with fine taste has drawn us to create every finish with every prop under the sun, all surreal patterns – constantly evolving our design library year after year. Galtex has since then grown to be a global manufacturer of fine textures with a strong presence in India & the Middle East.

This passion drove the Galtex core design team, to travel globally to research on multiple cultures, architectural styles ranging from heritage to neo modern, minimalist to maximalist, palaces to shacks, minarets to malls, domes to dunes, rustic to chic and emulate fine finishes. We create finishes with state-of-the-art texturing tools as well as anything that comes in handy for amazing creations like bob pins to shells. The USP that Galtex consciously fosters are 'Bespoke' – our shade cards serve as an indicator to shake up your creative side. We'd still leave it up to you to decide a finish, bring new swatches, blend in something new to make it unique and exclusive.

Many mainstream paint companies have branched out with a Texture range made of chemical ingredients, creating only repeated stereotypical patterns which are quite predictable and common. Many small players who have mushroomed up offering similar finishes may manage fake lookalikes, with substandard raw materials, hazardous chemicals with only an artificial look overall.

### VISION

To be the premium and preferred provider of best-in-class Texture Finishes and decorating products, surprise and delight our customers with excellent products, quality, and service to consistently achieve measurable results in our chosen markets.

### MISSION

To enable our clients and customers with every opportunity to innovate, reengineer and think out of the box with their decorating needs and enhance the aesthetics, durability and cost efficiency in the most customer friendly, economical manner with quality and commitment as a non-negotiable element.

### VALUES

- # CLIENTS - To take immense care of our clients, their expectations and what they enjoy.
- # CONFIDENT - Sure of market trends & understand the psyche of the customer.
- # SUSTAINABLE - Enduring, sustainable, eco-friendly products that face the test of time.
- # HONEST - Belief in unyielding integrity.
- # SURPRISING - Unimaginable finishes launched year on year, every season.



## USP: - B.E.S.P.O.K.E

You name, show or talk about a feeling, memory, thought or finish, something out of nostalgia or out of a travel from years ago – could be a driftwood, denim, shell, stucco art, mud, art deco, geometrics, intricate weaves, metallic heirlooms, oxide floors, ripples and so on.

Let's get talking about the unique ambience you want to create with your walls – believe us, your walls will transform into your signature style statement.

## CELEBRATE YOUR WALLS – BRING SOME SPARKLE ON...

### PREMIERING THE LUXE GALTEx SPARKLE SERIES

Every room, every wall, even the nooks have a story to tell. Some bring in the fragrance of our childhood, a special day, precious moments, memories that travel with us, or dreams about our future, of rewarding ourselves for goals achieved, our passions and aspirations. These form the blueprint of the themes we love to have around us.

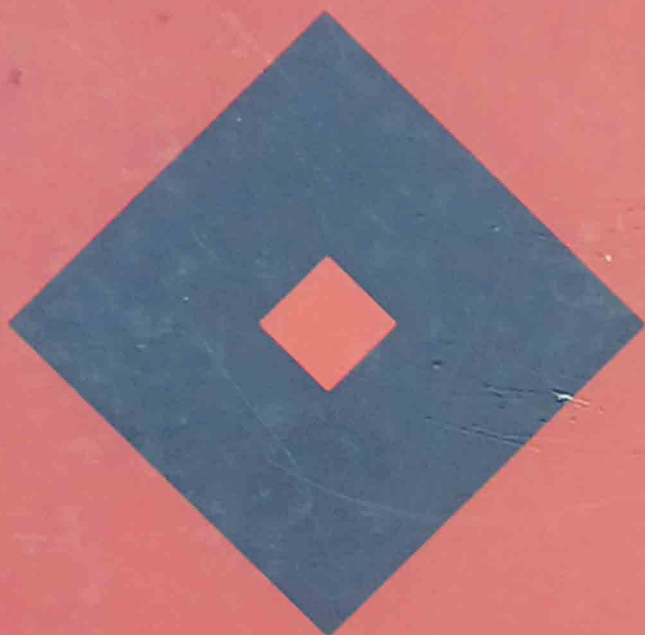
We bring you a series seen never agoto decorate, celebrate and flaunt your walls and make them the centre piece – GALTEx SPARKLE SERIES. We have an array of 32 luxe finishes and shades to choose from.

Think the shimmery Pom Pom cheerleaders, glittery festive décor, banners, rangolis –  
Or the naïve gloss of morning dew, drizzle by the window –  
Or the divine pearly sheen of muted Silver, Pearl, or Platinum and Ice –  
Be it the solemn glow of shades of Gold –  
To the worn out beaten shades of Copper and bronze ore on antiques –  
Even the bling looks of diamante, rhinestone, or Swarovski crystals to muted jewel toned PolkiandKemp stones....

You could choose our texture finishes with a luminous topcoat from our Sparkle series for exclusivity at its best. These are the to-go series if you want to do a quick makeover for your walls, or make it special for an event, or theme it in no time!

From now indeed – All that glitters is not Gold, it could well be Galtex Sparkle Finishes.





### **GALTEX COATINGS PVT LTD**

📍 20/289A, NH-544, Metro Pillar 330, Pathadipalam,  
Changampuzha Nagar PO, Kochi-682033, India

☎ +91 484 2542542 ✉ [coatings@galtexindia.com](mailto:coatings@galtexindia.com)

📘 GaltexTextures | 📷 [galtexcoatings](https://www.instagram.com/galtexcoatings) | [www.galtexindia.com](http://www.galtexindia.com)

📺 **Galtex Texture Training**

Customer Care - 9895 400 500