

High Decoration



GALTEX[®]
Specialty Paints & Textures



Crackle Varnish

A system, composed of water-based primer and finishing paint, with a special varnish that produces the crackled or aged effect in the finish.



HOW TO USE

1



Apply the desired colour of crackle base coat by roller. Let it dry for 6-8 hours

Finishing Paint Crackle

Matt plastic paint formulated as a primer and topcoat to recreate the crackle effect.

2



Apply a first coat of crackle with a thread roller, leaving enough material and spreading it over the entire surface. Let it dry for 12-24 hours.



Repeat the crackle application and let the surface dry for 24 hours.

3

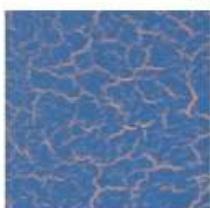


Apply the finishing product to obtain the crackle effect. Allow the product dry, observing that the desired crackle effect is produced after a few minutes.

Crackle Transparent Paint

Water-based, not covering transparent paint, with a cracked, peeled or fissured effect.

Finishing examples



Cleaning with water



9-13 m²/Ltr

Crackle Varnish



EFESO GRASO

STUCCO LIME



Inspired by the simplicity of diana's temple rooms, one of the seven wonders of the world, this fine coating regains the solemnity of the marble walls that guarded the precious offerings to the goddess of the moon and the woods.

PRODUCT DESCRIPTION

It is a thin-layer coating of fat lime and minerals for indoor use. It allows to create multiple decorative finishes (marble type) and can be applied on our Éfeso Marmo. Supplied in white and 20 colours pigmented with our MIXOLOGY SYSTEM. Alkali resistant.

APPLICATION

1. On a well-prepared surface, apply one coat of PRIMER diluted with water (25-50%). Let dry for 8 to 12 hours.
2. Then, apply one coat of EFESO GRASO with a trowel uniformly.
3. Once the first coat is almost dry, apply touches of product with trowel or spatula until covering the entire surface.
4. Once it is dry, apply a final coat and scrape over the stucco to reveal the decoration.
5. To finish, polish before complete drying with trowel or stainless steel spatula to enhance all its splendour, offering high gloss and extraordinary surface hardness.

NOTE

20 colours pigmented with our MIXOLOGY system.

The colours of this brochure have been made with graphic inks. There may be slight differences of shade with regard to the colour manufactured.

1



2



3



4



5





3000



3001



3002



3003



3004



3005



3006



3007



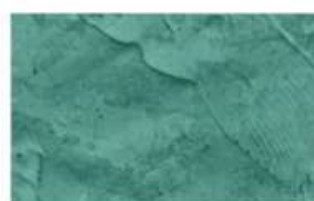
3008



3009



3010



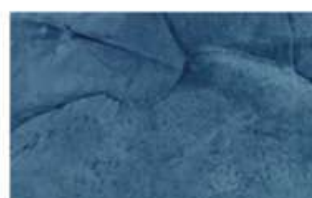
3011



3012



3013



3014



3015



3016



3017



3018



3019

EFESO GRASO

ANTE VELADURA

COLOUR WASH GLAZE



On bases of all types, regular or rough, on both interior and exterior surfaces, the glaze recreates the appearance of the ancient Genoese patinas. A technique of Renaissance inspiration for a specially decorative finish.

PRODUCT DESCRIPTION

A special water-based glaze that offers high standard decorative finishes and a very easy application. The colours of the chart are obtained by mixing ANTE VELADURA and TONOS (TONES) in the proportions indicated. The mixture should be stirred thoroughly until the colour is homogeneous (to avoid colour bursts). This product is fully washable and can be applied on interior and exterior surfaces. For more information, refer to the technical data sheet.

APPLICATIONS

1. On a well-prepared surface, apply one or two coats of white or coloured satin plastic paint. Allow to dry for 6-12 hours.
2. Then apply ANTE VELADURA paint as it is or diluted to 5-10% with drinking water, using a short-nap roller or flat brush, in stretches of 2-3 m² applying regularly and always leaving irregular and blurred joins.
3. Immediately after and to finish (while the glaze is still wet), perform the drawing using the chosen tool-technique: decorative roller, sponge, Vileda-pad, mitten, etc. (It is advisable to remove excess paint from the tool when each area has been painted to avoid saturation).

NOTE

These colours are obtained by mixing 1/2 TONE pot of 250 ml with 2.5 L ANTE.

The colours of this brochure have been made with graphic inks. There may be slight differences of shade with regard to the colour manufactured.

1



2



3





TONE 01



TONE 03



TONE 06



TONE 08



TONE 10



TONE 11



TONE 14 SILVER



TONE 15 GOLD

ANTE VELADURA

PANDORA

GOLD SILVER

P

The latest trend in decoration providing sophistication, brilliance and amplitude to modern spaces and also harmonizing with classic styles. Be seduced by its brilliance and luminosity and get a unique, modern and very personal space. This range of new colors is without any doubt a very suitable option, in gold and silver colours with glitter effects and new textures.

PRODUCT DESCRIPTION

Pandora is a decorative paint with special water-based and non covering extenders. Formulated on the basis of the latest technology in high decoration

to offer its original finish for indoors and outdoors. Decoration with matte-satin and clear-dark effects, good wet rub resistance, long life, good yield and easy application.

APPLICATIONS

SURFACE PREPARATION

New unpainted surfaces: remove stains and dust, loose particles, cover cracks, etc.

Painted surfaces:

- With lime, remove previously in depth.
- With paint, remove parts in bad conditions and of low quality.

Once the surface is clean, apply our yellow or grey PRIMER PANDORA depending on the desired finish color.

INSTRUCTIONS OF USE

1. The surface must be clean and dry. Apply one coat of PRIMER PANDORA and wait two hours.
2. Apply undiluted PANDORA with a spalter paint brush to achieve the desired effect.
3. Once the first coat is dry, apply a second coat of PANDORA.
4. This is the result. If you want a more intense finish, you can use Galtex Acrylic Metalizado as a primer.

NOTE

The colours of our chart can also be used as primers. Suitable for indoor / outdoor. Colours available through our MIXOLOGY TINTING SYSTEMS.

The colours of this brochure have been made with graphic inks. There may be slight differences of shade with regard to the colour manufactured.

1



2



3



4





GALTEX
Specialty Paints & Textures



PANDORA GOLD
PRIMER - YELLOW



PANDORA SILVER
PRIMER - GREY



PANDORA SILVER
PRIMER - BLUE





Chalk effect paint, water-based. Play with your creativity in decoration



GALTEX[®]
Specialty Paints & Textures



Applications Infinite



**Decorate and carry out...handcraft works
infinite number of applications**

on natural or painted wood without any preliminary preparation, nor primer, can be applied on other materials such as:

- cement
 - brick or stone
 - plaster...
- duly prepared



step by step

Galtex Chalk Paint is a paint that **does not require any previous primer application** on surfaces already painted. **Sanding is not necessary.**

❶ Clean the surface of furniture well and remove dust residues.

❷ Apply **Chalk Paint** with a brush, roller or aerographic spray gun with low dilution: brush or roller 5-10%, spray gun 15-20% of drinking water.

❸ Apply two coats at least.

❹ Let dry one hour between layers (depending on the surface characteristics such as reliefs or textures).

to protect:

Apply our colourless Finishing Wax Chalk Paint (**cera incolora**) with a brush, cotton cloth or sponge. Handcrafted and vintage look that protects the paint and the painted piece of furniture.

aged look:

Apply our Dark Finishing Wax Chalk Paint (**cera Oscura**) To finish wipe with a cloth, until the desired brightness is obtained.

higher resistance:

Water-based and colourless matt **varnish** to apply on our Chalk Paint, for a higher resistance. Colourless, low odour, non-yellowing, resistant, with an excellent performance, matt degree and easy application. Finish: matt.

vintage look:

Apply two coats of different colours and sand after to see the colour of the background. Finish with wax or varnish depending on the desired effect. Cleaning of utensils with water.



Choose your color and enjoy decorating



Performance

chalk paint

8-11 m²/Ltr

chalk paint varnish

9-12 m²/Ltr

chalk paint waxes

10-18 m²/Ltr



coco
coconut | coco



Frappé



rosa quarzo
quartz pink | rose quartz
| rosa quirzo



malva
mauve | mauve



manhattan



miel
honey | miel
| miel



menta
mint | menthe



caipirinha
caipirinha | caipirinha
| caipirinha



grafito
graphite | graphite
| grafite



serenity



hawai
hawaii | hawaii



azul indigo
indigo blue | bleu indigo

Choose your colour and enjoy decorating 12 colours + white

Performance:
Galtex chalk paint:
8-11 m²/Ltr and coat.
varnish Galtex chalk
paint: 9-12 m²/Ltr and
coat.
Galtex chalk paint
waxes: 10-18 m²/Ltr
and coat.



The colours of this chart are indicative of the real colours. The shade may vary due to the brochure printing.

Step by Step



Galtex Chalk Paint

It is an all-terrain paint since you don't need one prior priming on already painted surfaces. No need to sand.



1

Clean the surface well and remove traces of dust



Cleaning utensils with water



2

Apply Chalk Paint with brush, roller airbrush gun with little dilution: brush or roller 5-10%, spray 15-20% drinking water



3

Apply two coats minimum



4

Let dry for an hour between layer and layer (it will depend if the surface has small details like reliefs or textures)

Protector



Apply our Wax colorless finish Chalk Paint by brush, cotton cloth or sponge.

Aged Appearance



Apply our Wax Dark finish Chalk Paint. For finish polishing with a cloth until you get the desired brightness.

Greater Resistance



Matte water-based varnish colorless to apply about our painting Chalk Paint for a major resistance, low odour, non yellowing, with excellent performance, easy application. Matte finish

Vintage

Apply two coats of different colors and then sanding, so that the background color can be seen. Finish with wax or varnish depending on the effect you want to achieve.



GALTEX
Specialty Paints & Textures



The technological evolution applied to the manufacture and composition of the paints has allowed us to offer more innovative finishes. GALTEX offers a wide range of high decoration solutions characterized by following the latest trends.

"In Decoration, be creative"

Discover what a good decorative product can do for your home.



GALTEX COATINGS PVT LTD

📍 1st Floor, Galtex Square, NH-544

Metro Pillar 330, Pathadipalam
Kochi, Kerala, India. PIN - 682 033

☎ +91 484 2542542

www.galtexindia.com

📘 GaltexTextures | 📷 galtexcoatings

📺 Galtex Texture Training